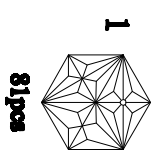


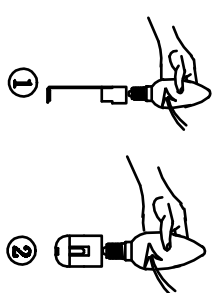
RM-1040-25



Cautions of installation

Install the bulbs

Hold the bulb firmly
 (you should not touch the
 hardware part in case of
 electric shock) and then install
 it clockwise till it is firm.



1. Check the packed bags with numbers then open them.
2. Hang the crystals to the right places according to the illustration.
3. If some crystals were broken, you can get some in the spare parts bag.

